

# MODEL OF THE MONTH

## Filati Home 50



### MODELL 50

#### Lace Shawl

Approx. 70 3/4" x 37 1/2"

[180 x 95cm]

**Materials:** approx. **8 balls** (approx. 247yd/225m each) of Lana Grossa **Fumato** (42% superfine Merino wool, 40% polyamide, 18% baby alpaca) in grey/charcoal (**col 18**); size 6 [4mm] circular needle, 40" [100cm] long, size E/4 [3.5mm] crochet hook.

**Rev st st:** p on RS; k on WS.

**Lace Pattern A:** work according to chart A. Numbers at right edge of chart indicate RS rows; on WS rows, p all sts and yo's. Beg chart pat with sts before first arrow, work 10 sts between arrows for pat repeat, end with sts after 2nd arrow. Repeat rows 1-8 throughout. Note: scalloped edge is formed by lace pat A.

**Lace Pattern B:** work according to chart B on page xx. Numbers at right edge of chart indicate RS rows; on WS rows, p all sts and yo's. Beg chart pat with sts before first arrow, work 10 sts between arrows for pat repeat, end with sts after 2nd arrow. Repeat rows 1-16 throughout.

**Gauge:** 17 sts and 24 rows = 4" [10 cm] in lace pat.

**Shawl:** cast on 163 sts. Work 2 rows in rev St st, work 8 rows in lace pat A according to chart A, work 2 rows in rev St st. Next, work in lace pat B according to chart B for 67" [170cm], ending with chart rows 1-8. Work 2 rows in rev St st, then bind off all sts.



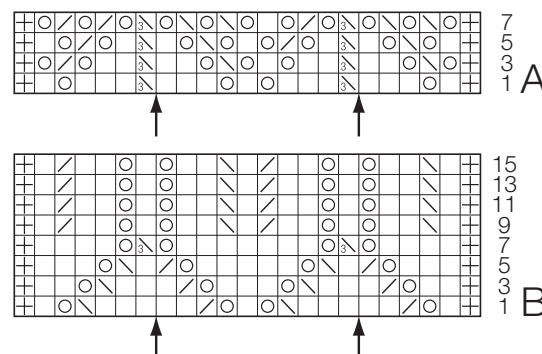
For 2nd scalloped edge, cast on 163 sts and work in lace pat A for 8 rows. K 1 RS row, then bind off all sts in purl on next WS row. Sew 2nd scalloped edge to bind-

off edge of shawl. With crochet hook, work 1 row rev sc [work sc from left to right] along each long edge.

**Finishing:** pin piece to measurements and block with damp towels.



### Charts A and B



#### Chart key:

- ☐ = selvage st
- = k1
- ⊙ = yo
- ⊞ = k2tog
- ⊞ = SKP [sl1 kwise, k1, pss0]
- ⊞ = SK2P [sl1 kwise, k2tog, pss0]

For more information go to [www.lanagrossa.com](http://www.lanagrossa.com)